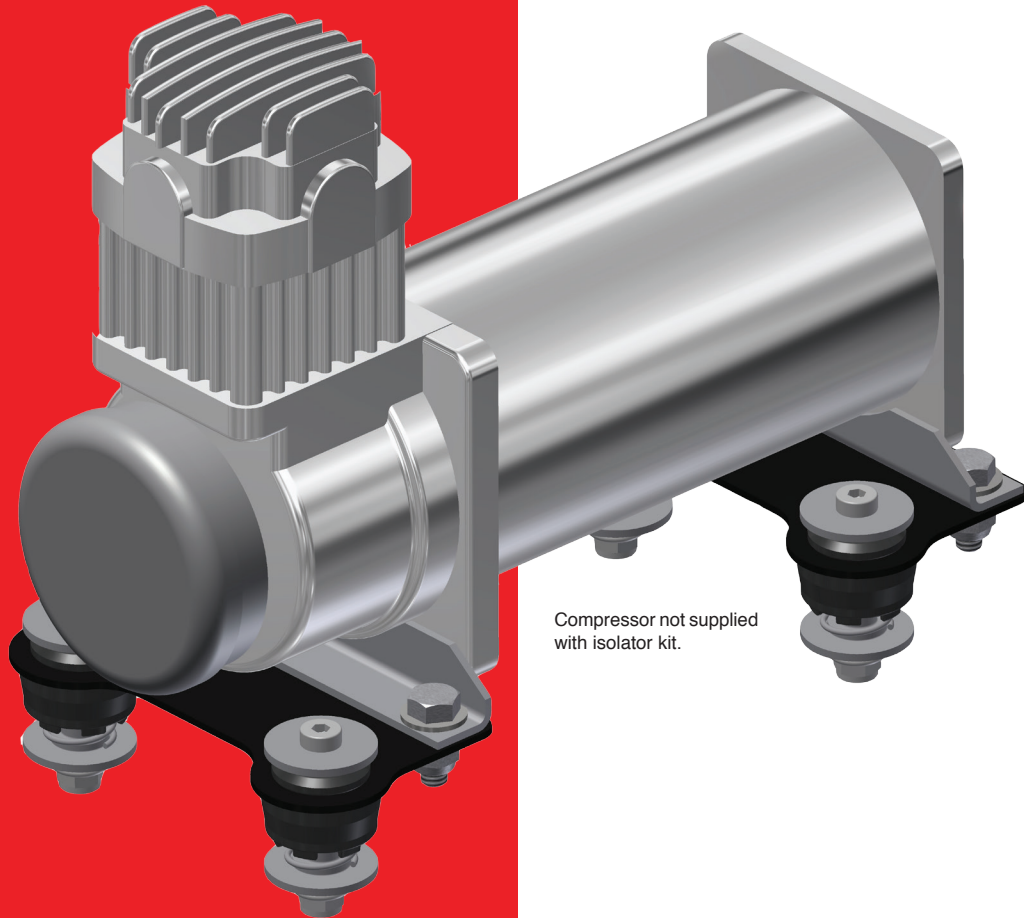




# ***Compressor Isolator Kit 50714***



Compressor not supplied  
with isolator kit.

## **INSTALLATION GUIDE**

For maximum effectiveness and safety,  
please read these instructions completely  
before proceeding with installation.

*Failure to read these instructions can result in an  
incorrect installation.*



View AutoPilotV2™ videos at:  
[www.airliftperformance.com/video/](http://www.airliftperformance.com/video/)



## TABLE OF CONTENTS

<b>Installation Diagram . . . . .</b>	<b>4</b>
<b>Hardware List. . . . .</b>	<b>4</b>
<b>Installing the Compressor Isolator Kit . . . . .</b>	<b>5</b>
<b>16444 Compressor Mounting Template . . . . .</b>	<b>7</b>
<b>Limited Warranty and Return Policy . . . . .</b>	<b>10</b>
<b>Replacement Information . . . . .</b>	<b>11</b>
<b>Contact Information . . . . .</b>	<b>11</b>

# Introduction

The purpose of this publication is to assist with the installation of an Air Lift Performance compressor isolator kit.

It is important to read and understand the entire installation guide before beginning installation. The information includes a hardware list, step-by-step installation information and safety information.

Air Lift Company reserves the right to make changes and improvements to its products and publications at any time. For the latest version of this manual, contact Air Lift Company at (800) 248-0892 or visit our website at [www.airliftperformance.com](http://www.airliftperformance.com).

## NOTATION EXPLANATION

Hazard notations appear in various locations in this publication. Information which is highlighted by one of these notations must be observed to help minimize risk of personal injury or possible improper installation which may render the vehicle unsafe. Notes are used to help emphasize areas of procedural importance and provide helpful suggestions. The following definitions explain the use of these notations as they appear throughout this guide.

**DANGER**

INDICATES IMMEDIATE HAZARDS WHICH WILL RESULT IN SEVERE PERSONAL INJURY OR DEATH.

**WARNING**

INDICATES HAZARDS OR UNSAFE PRACTICES WHICH COULD RESULT IN SEVERE PERSONAL INJURY OR DEATH.

**CAUTION**

INDICATES HAZARDS OR UNSAFE PRACTICES WHICH COULD RESULT IN DAMAGE TO THE MACHINE OR MINOR PERSONAL INJURY.

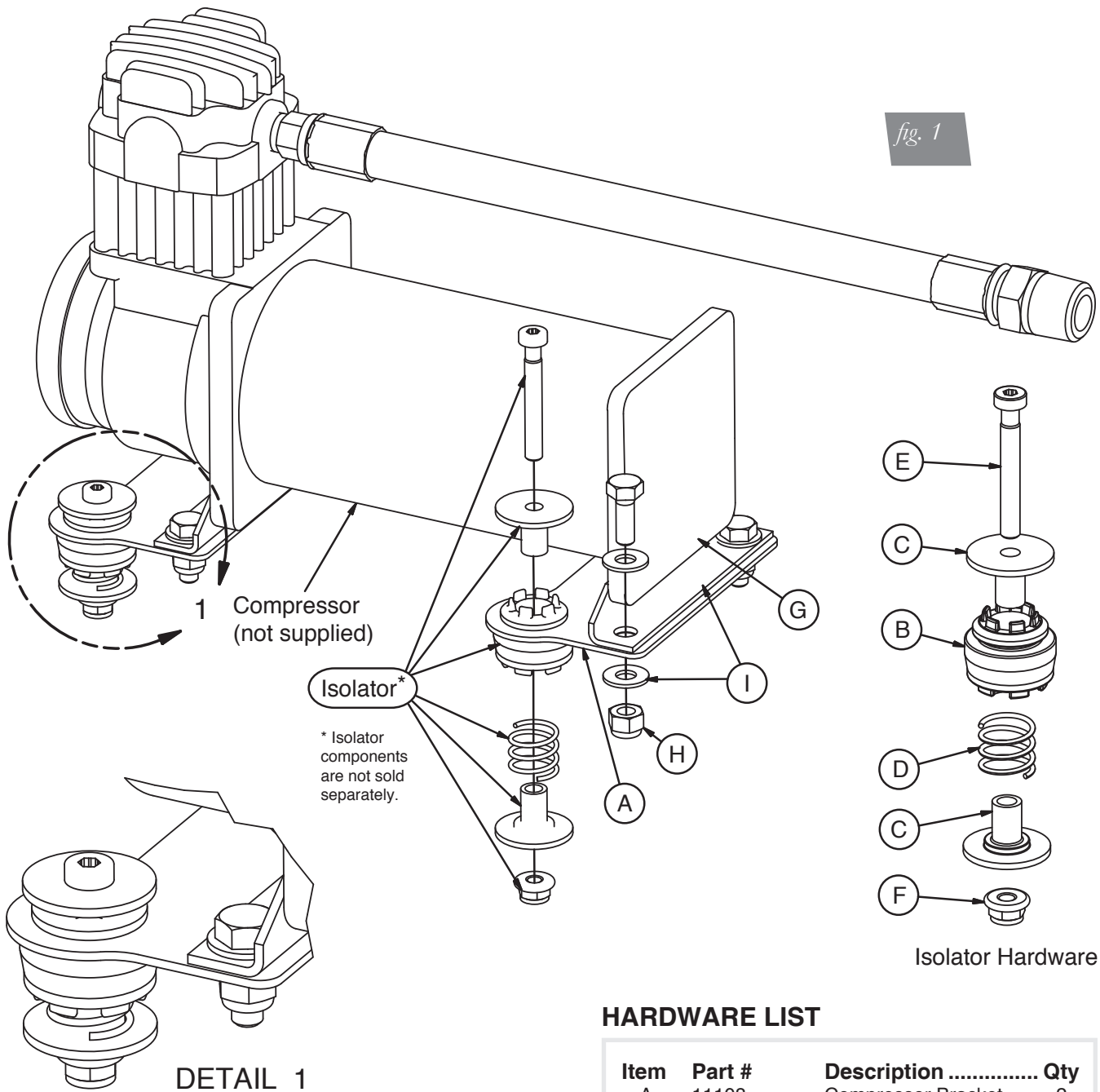
---

## NOTE

*Indicates a procedure, practice or hint which is important to highlight.*

---

# Installation Diagram



**NOTE:** The torque specification for the 1/4"-20 nylon lock nuts (H) and M6 nuts (E, F) is **ONLY** 5 lb.-ft.



Missing or damaged parts? Call Air Lift customer service at (800) 248-0892 for a replacement part.

# Installing the Compressor Isolator Kit

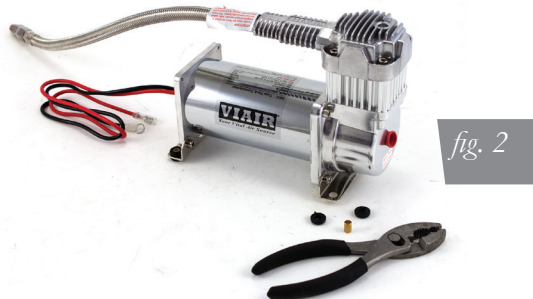
1. **Layout:** Plan compressor location first. Prior to mounting, check to make sure the electrical harness connections will reach the compressor, the compressor leader hose will reach the tank, and the plumbing will route cleanly through the vehicle.

## CAUTION

BE SURE TO INSTALL ALL COMPONENTS AS FAR AS POSSIBLE FROM ANY HEAT SOURCES. PLAN AND PREPARE HARNESS AND PLUMBING ROUTING THROUGH THE VEHICLE. ELIMINATE ALL SHARP EDGES THAT COULD CHAFE. USE GROMMETS WHEN PASSING THROUGH COMPARTMENT WALLS.

2. **Attach the isolators and brackets to the compressor (fig. 1).**

- Remove the factory VIAIR® rubber isolators and sleeves (fig. 2).



- Attach the compressor isolators and brackets to your VIAIR® air compressor with the supplied 1/4"-20 hardware.
- Refer to the diagram (fig. 1) on page 4 for proper installation and parts layout.

## CAUTION

THE TORQUE SPECIFICATION FOR THE 1/4"-20 NYLON LOCK LOCK NUT IS ONLY 5 LB.-FT. OVER TIGHTENING WILL CAUSE PERMANENT DAMAGE TO THE ISOLATOR COMPONENTS.

3. **Prepare and install the compressor.**

- Prepare the compressor intake. If installed inside the vehicle, attach the filter to the port on the end of the compressor. If the compressor is located outside the vehicle, snorkel the inlet filter to a dry location inside the vehicle.
- Center punch and drill four holes using the template on page 8.
- Insert the isolator springs, spring seats, and retaining washers onto the compressor. Refer to the diagram (fig. 1) on page 4 for proper installation and parts layout.
- Mount the compressor with the supplied M6 nut and bolts.

## CAUTION

DO NOT MOUNT COMPRESSORS UPSIDE-DOWN. HEAT TRAVELS UPWARD AND DOES NOT DISSIPATE WELL IN THE MOTOR HOUSING. A SIDEWAYS MOUNTING MAY REDUCE THE LIFE OF THE PISTON SEAL AND COMPRESSOR.

## CAUTION

THE TORQUE SPECIFICATION FOR THE M6 NUTS IS ONLY 5 LB.-FT. OVER-TIGHTENING WILL CAUSE PERMANENT DAMAGE TO THE ISOLATOR COMPONENTS.

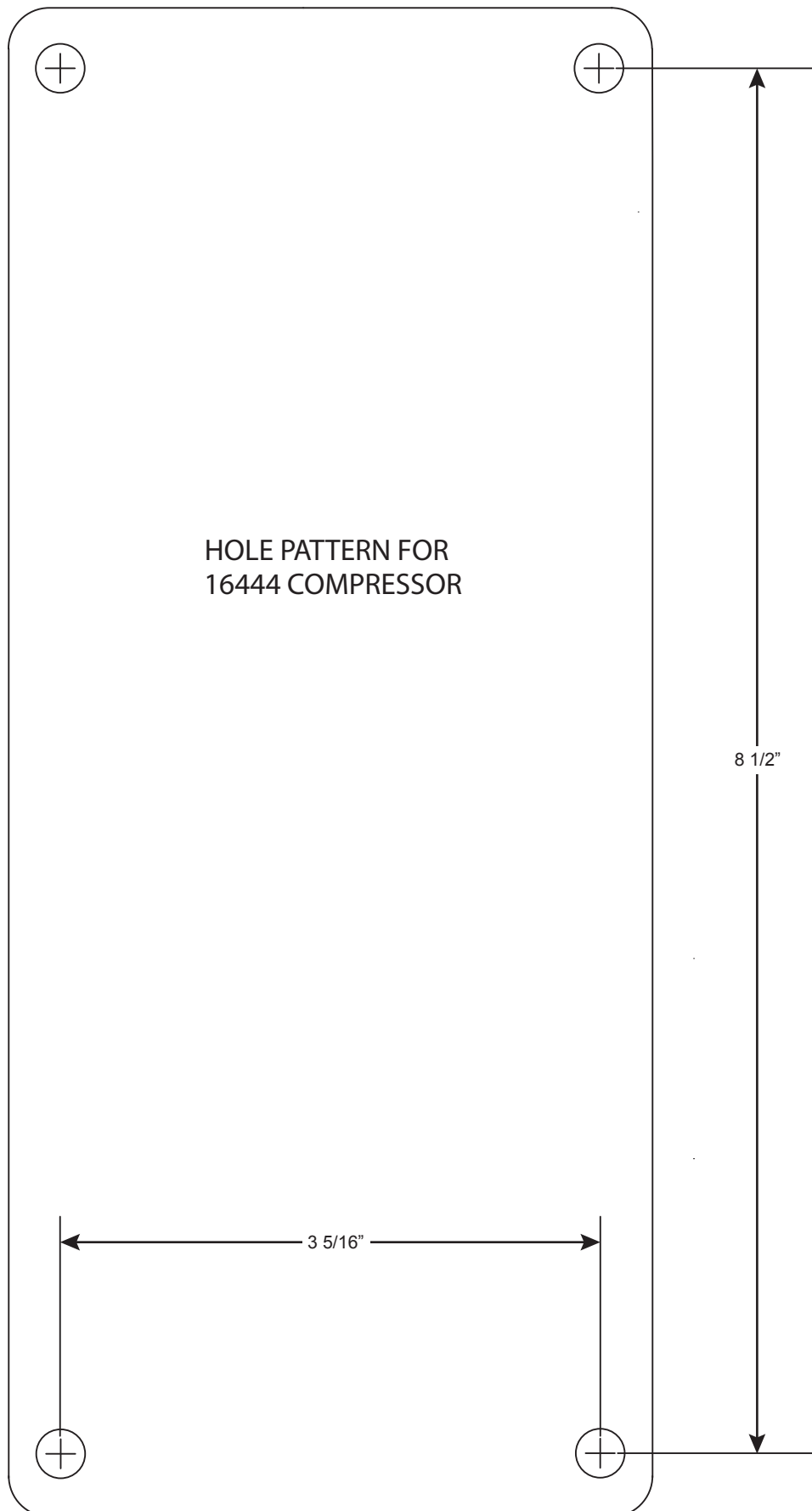
## NOTE

*If the harness must be lengthened, use properly sized butt connectors and wire. If extending the power/ground wires, use 8AWG wire minimum or contact Air Lift for more information.*

*The main Auto Pilot V2 harness is only capable of powering a single compressor. If installing dual compressors, a second dedicated power wire is required. Consult the Auto Pilot V2 Manual (MN-754) for proper wiring, and contact Air Lift for an optional second compressor harness (part number: 27679).*

# Notes

# 16444 Compressor Mounting Template



## CAUTION

IMPORTANT: PRINT THIS MANUAL AT 100% SCALE. THIS MANUAL CONTAINS A DRILLING TEMPLATE, WHICH WOULD BE RENDERED INCORRECT IN DIMENSION IF PRINTED WITH ANY SCALING. USING AN INCORRECT TEMPLATE TO DRILL HOLES MAY CAUSE DAMAGE TO THE VEHICLE!

PLEASE REFER TO THE ONE-INCH SCALE (FIG. 3) AND USE A MEASURING TOOL TO CONFIRM THAT THE PRINTED SCALE MEASURES ONE-INCH TO VERIFY THAT THE TEMPLATE HAS BEEN PRINTED AT 100% SCALE. IF IT IS PRINTED AT ANY SCALE OTHER THAN 100%, YOU COULD END UP DRILLING IN THE WRONG LOCATIONS ON THE VEHICLE.

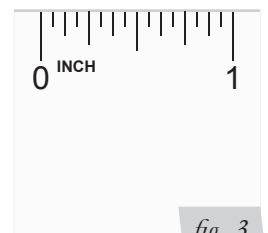


fig. 3





# Notes

# Limited Warranty and Return Policy

## WHAT THIS WARRANTY COVERS

Air Lift Company warrants to the original purchaser for a period of one year from the date of original purchase that the Air Lift Performance damper kits will be free from defects in workmanship and materials for the normal expected life of the part when used on cars and trucks as specified by Air Lift Company and under normal operating conditions, subject to the requirements and exclusions set forth below.

## WHAT THIS WARRANTY DOES NOT COVER

The warranty does not apply to products that have been improperly applied, improperly installed, or which have not been maintained in accordance with installation instructions furnished with all products. This warranty does not apply and is void if damage or failure is caused by: accident, abuse, misuse (including but not limited to racing or off-road activities or commercial use), abnormal use, faulty installation, liquid contact, fire, earthquake or other external cause; operating the product outside Air Lift Company's instructions, specifications or guidelines; or service, alteration, maintenance or repairs performed by anyone other than Air Lift Company to the product from its purchased condition. This warranty also does not apply to: Universal Air (Fabricator Kits), consumable parts, such as batteries; cosmetic damage, including but not limited to scratches or dents; defects caused by normal wear and tear or otherwise due to the normal aging of the product, or if any serial or identification number has been removed or defaced from the product. Air Lift Company reserves the right to change the design of any product without assuming any obligation to modify any product previously manufactured.

## LIMITATION OF LIABILITY

To the extent permitted by law, this warranty and the remedies set forth herein are exclusive and in lieu of all other warranties, remedies and conditions, whether oral, written, statutory, express or implied. AIR LIFT COMPANY DISCLAIMS ALL STATUTORY AND IMPLIED WARRANTIES, INCLUDING WITHOUT LIMITATION, WARRANTIES OF MERCHANTABILITY AND FITNESS FOR A PARTICULAR PURPOSE AND WARRANTIES AGAINST HIDDEN OR LATENT DEFECTS TO THE EXTENT PERMITTED BY LAW. To the extent such warranties cannot be disclaimed, such implied warranties shall apply only for the warranty period specified above. Please note that some states do not allow limitation on how long an implied warranty (or condition) lasts. So the above limitation may not apply to you.

Except as provided in this warranty and to the extent permitted by law, Air Lift Company shall not be liable for any direct, special, incidental or consequential damages resulting from any breach of warranty or condition, or arising in connection with the sale, use or repair of air lift products, or under any other legal theory, including but not limited to loss of use, loss of revenue, loss of actual or anticipated profits, loss of the use of money, loss of business, loss of opportunity, loss of goodwill, and loss of reputation. Air Lift Company's maximum liability shall not in any case exceed the purchase price paid by you for the Air Lift product. Please note that some states do not allow the exclusion or limitation of incidental or consequential damages, so the above limitation or exclusion may not apply to you.

## HOW TO GET SERVICE

If a defect in workmanship or materials causes your Air Lift Performance product to become inoperable within the warranty period, before returning any defective product, call Air Lift Company at (800) 248-0892 in the U.S. and Canada (elsewhere, (517) 322-2144) to obtain a Returned Materials Authorization (RMA) number. The consumer shall be responsible for removing (labor charges) the defective product from the vehicle and returning it, shipping costs prepaid, to Air Lift Company for verification. Returns to Air Lift Company must be postage prepaid and sent to: Air Lift Company • 2727 Snow Road • Lansing, MI • 48917. You must prove to the satisfaction of Air Lift Company the date of original purchase of your Air Lift Performance product. You must also enclose the RMA number and a return address. A minimum \$10 shipping and handling charge will apply to all warranty claims. You must also pack the product to minimize the risk of it being damaged in transit. If we receive a product in damaged condition as the result of shipping, we will notify you and you must seek a claim with the shipper.

## WHAT AIR LIFT COMPANY WILL DO

If you submit a valid claim to Air Lift Company during the warranty period, Air Lift Company will, at its option, repair your Air Lift Performance product or furnish you with a new or rebuilt product. Air Lift Company will not reimburse you for repairs or replacement parts provided by other parties. Your repaired or replacement Air Lift Performance product will be returned to you (subject to payment of the required warranty claim shipping and handling charge) and it will be covered under the warranty for the balance of the warranty period, if any. When a product or part is replaced, any replacement item becomes your property and the replaced item becomes property of Air Lift Company. You are responsible for installation/reinstallation (labor charges) of the product.

## HOW THE LAW RELATES TO THIS WARRANTY

This warranty gives you specific legal rights and you may also have other rights which vary from state to state. By this warranty, Air Lift Company does not limit or exclude your rights except as allowed by law. To fully understand your rights, you should consult the laws of your state.

## Replacement Part Information

If replacement parts are needed, contact the local dealer or call Air Lift customer service at (800) 248-0892. Most parts are immediately available and can be shipped the same day.

**Contact Air Lift Company customer service at (800) 248-0892 first if:**

- Parts are missing from the kit.
- Need technical assistance on installation or operation.
- Broken or defective parts in the kit.
- Wrong parts in the kit.
- Have a warranty claim or question.

**Contact the retailer where the kit was purchased:**

- If it is necessary to return or exchange the kit for any reason.
- If there is a problem with shipping if shipped from the retailer.
- If there is a problem with the price.

## Contact Information

<b>Mailing address</b>	P.O. Box 80167 Lansing, MI 48908-0167
<b>Shipping address for returns</b>	2727 Snow Road Lansing, MI 48917
<b>Phone</b>	Toll free: (800) 248-0892 International: (517) 322-2144
<b>Email</b>	service@airliftcompany.com
<b>Web address</b>	www.airliftcompany.com

## Need Help?

Contact Air Lift Company customer service department by calling (800) 248-0892. For calls from outside the USA or Canada, dial (517) 322-2144.



Connect by searching for **Air Lift Performance** #LifeonAir



*Thank you for purchasing Air Lift Performance products!*

Air Lift Performance • 2727 Snow Road • Lansing, MI 48917 or P.O. Box 80167 • Lansing, MI 48908-0167  
Toll Free (800) 248-0892 • Local (517) 322-2144 • Fax (517) 322-0240 • [www.airliftperformance.com](http://www.airliftperformance.com)

Printed in the USA  
JJC-1216